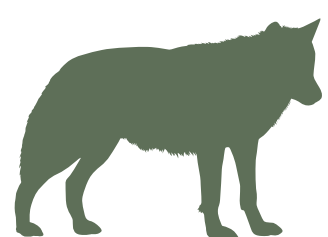


# HORAIRES ANIMATIONS



## LES LOUPS

Nourrissage pédagogique

Emplacement sur le plan : 4

**10h30**

🕒 30 minutes



## LES VAUTOURS ET LES PYGARGUES A QUEUE BLANCHE

Nourrissage pédagogique

Emplacement sur le plan : 13

**11h00**

🕒 40 minutes



## LES 20 ANS + LE CENTRE DE SOINS

Documentaire projeté

Emplacement sur le plan : 15

**12h00-14h00**

🕒 20 minutes



## LE THÉÂTRE DU VIVANT

Animation pédagogique

Emplacement sur le plan : 15

**14h00**

🕒 30 minutes



## LES WALLABIES DE BENNETT

Nourrissage pédagogique

Emplacement sur le plan : 3 

**14h30**

🕒 15 minutes



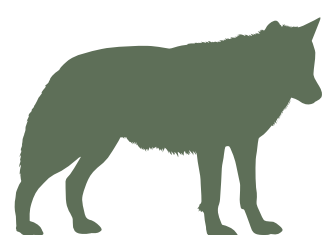
## LE VOL DES OISEAUX

Animation pédagogique

Emplacement sur le plan : 1

**15h00**

🕒 30 minutes



## LES LOUPS GRIS D'EUROPE

Nourrissage pédagogique

Emplacement sur le plan : 4

**16h30**

🕒 30 minutes

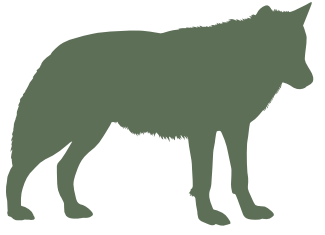


Horaire de fermeture du Parc : **18h00**

Swipe for  
the english version



# DAY'S EVENTS



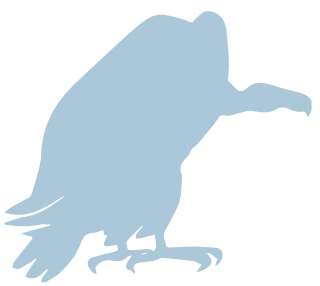
## WOLVES

Educational feeding in French

**10:30**

🕒 30 min

Location on the map : 4



## VULTURES & WHITE-TAILED EAGLES

Educational feeding in French

**11:00**

🕒 40 min

Location on the map : 13

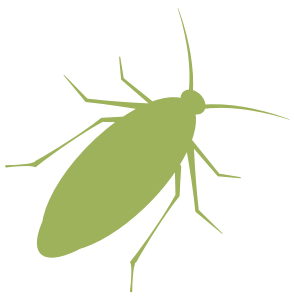


## THE PARK'S 20<sup>TH</sup> ANNIVERSARY + THE WILDLIFE CARE CENTER

Documentary screened in French

🕒 20 min

Location on the map : 15



## LE THÉÂTRE DU VIVANT

Educational event (reptiles, insects)

**14:00**

🕒 30 min

Location on the map : 15



## RED-NECKED WALLABIES

Educational feeding in French

**14:30**

🕒 15 min

Location on the map : 3 



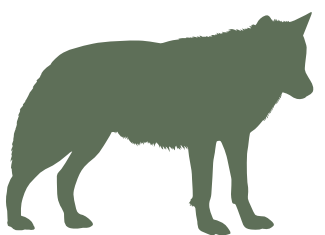
## FREE FLIGHT BIRD SHOW

Educational event (birds)

**15:00**

🕒 30 min

Location on the map : 1



## EUROPEAN GREY WOLVES

Educational feeding in French

**16:30**

🕒 30 min

Location on the map : 4



Park closing time : **18:00**

