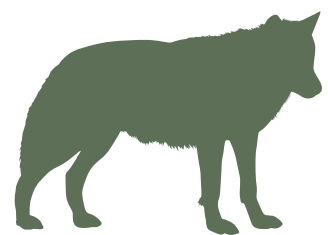


HORAIRES ANIMATIONS



LES LOUPS NOIRS ET BLANCS

Nourrissage pédagogique

10h30

🕒 30 minutes

Emplacement sur le plan : 4



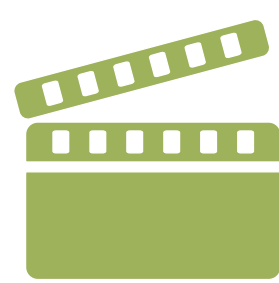
LES VAUTOURS ET LES PYGARGUES A QUEUE BLANCHE

Nourrissage pédagogique

Emplacement sur le plan : 13

11h00

🕒 40 minutes



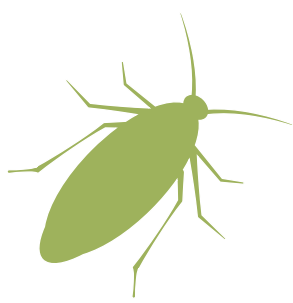
LES 20 ANS + LE CENTRE DE SOINS

Documentaire projeté

Emplacement sur le plan : 15

12h00-14h00

🕒 20 minutes



LE THÉÂTRE DU VIVANT

Animation pédagogique

Emplacement sur le plan : 15

14h00

🕒 30 minutes



LES WALLABIES DE BENNETT

Nourrissage pédagogique

Emplacement sur le plan : 3 

14h30

🕒 15 minutes



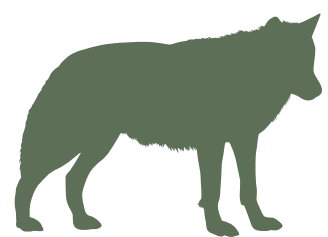
LE VOL DES OISEAUX

Animation pédagogique

Emplacement sur le plan : 1

15h00

🕒 30 minutes



LES LOUPS GRIS D'EUROPE

Nourrissage pédagogique

Emplacement sur le plan : 4

16h30

🕒 30 minutes

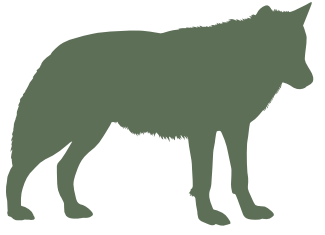


Horaire de fermeture du Parc : **18h00**

Swipe for
the english version



DAY'S EVENTS



CANADIANS & ARTICS WOLVES 10:30

Educational feeding in French

🕒 30 min

Location on the map : 4



VULTURES & WHITE-TAILED EAGLES 11:00

Educational feeding in French

🕒 40 min

Location on the map : 13

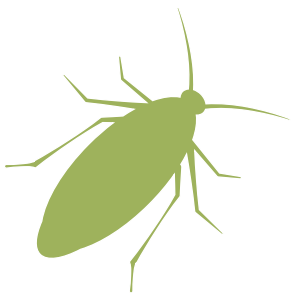


THE PARK'S 20TH ANNIVERSARY 12:00-14:00 + THE WILDLIFE CARE CENTER

Documentary screened in French

🕒 20 min

Location on the map : 15



LE THÉÂTRE DU VIVANT 14:00

Educational event (reptiles, insects)

🕒 30 min

Location on the map : 15



RED-NECKED WALLABIES 14:30

Educational feeding in French

🕒 15 min

Location on the map : 3 

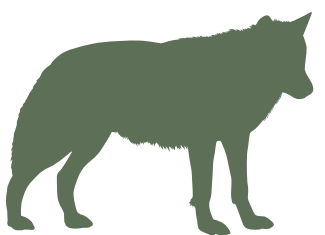


FREE FLIGHT BIRD SHOW 15:00

Educational event (birds)

🕒 30 min

Location on the map : 1



EUROPEAN GREY WOLVES 16:30

Educational feeding in French

🕒 30 min

Location on the map : 4



Park closing time : **18:00**

