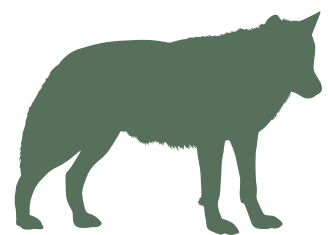


# HORAIRES ANIMATIONS



Susceptibles de changer les jours scolaires  
Garantis les mercredis, samedis et dimanches



## LES LOUPS

Nourrissage pédagogique

Emplacement sur le plan : 4

**10h30**

🕒 30 minutes



## LE VOL DES OISEAUX

Animation pédagogique

Emplacement sur le plan : 1

**11h00**

🕒 30 minutes



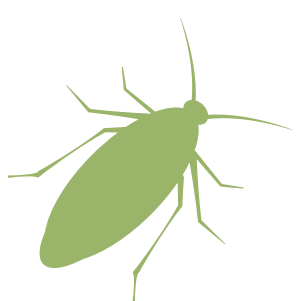
## LES 20 ANS + LE CENTRE DE SOINS

Documentaire projeté

Emplacement sur le plan : 15

**12h00-14h00**

🕒 20 minutes



## LE THÉÂTRE DU VIVANT

Animation pédagogique

Emplacement sur le plan : 15

**14h00**

🕒 30 minutes



## LES WALLABIES DE BENNETT

Nourrissage pédagogique

Emplacement sur le plan : 3 

**14h30**

🕒 15 minutes



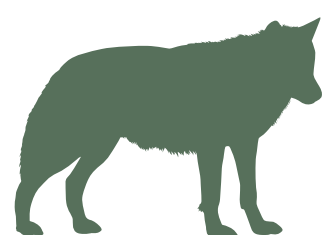
## LES VAUTOURS ET LES PYGARGUES A QUEUE BLANCHE

Nourrissage pédagogique

Emplacement sur le plan : 13

**15h00**

🕒 40 minutes



## LES LOUPS GRIS D'EUROPE

Nourrissage pédagogique

Emplacement sur le plan : 4

**16h30**

🕒 30 minutes



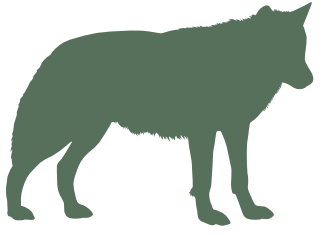
**Horaire de fermeture du Parc : 18h00**

Swipe for  
the english version



# DAY'S EVENTS

Subject to change on school days  
Guaranteed wednesdays, saturdays and sundays



## WOLVES

Educational feeding in French

10:30

🕒 30 min

Location on the map : 4



## FREE FLIGHT BIRD SHOW

Educational event (birds)

11:00

🕒 30 min

Location on the map : 1



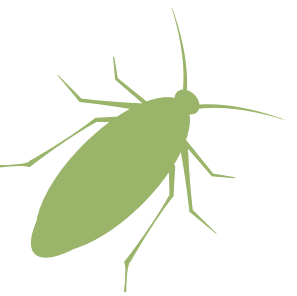
## THE PARK'S 20<sup>TH</sup> ANNIVERSARY + THE WILDLIFE CARE CENTER

Documentary screened in French

12:00-14:00

🕒 20 min

Location on the map : 15



## LE THÉÂTRE DU VIVANT

Educational event (reptiles, insects)

14:00

🕒 30 min

Location on the map : 15



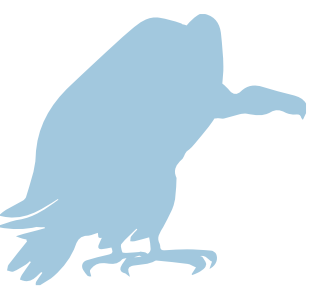
## RED-NECKED WALLABIES

Educational feeding in French

14:30

🕒 15 min

Location on the map : 3 



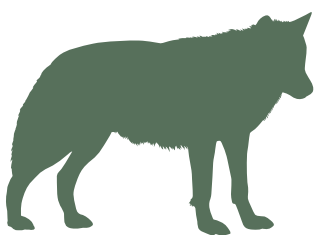
## VULTURES & WHITE-TAILED EAGLES

Educational feeding in French

15:00

🕒 40 min

Location on the map : 13



## EUROPEAN GREY WOLVES

Educational feeding in French

16:30

🕒 30 min

Location on the map : 4



Park closing time : 18:00

